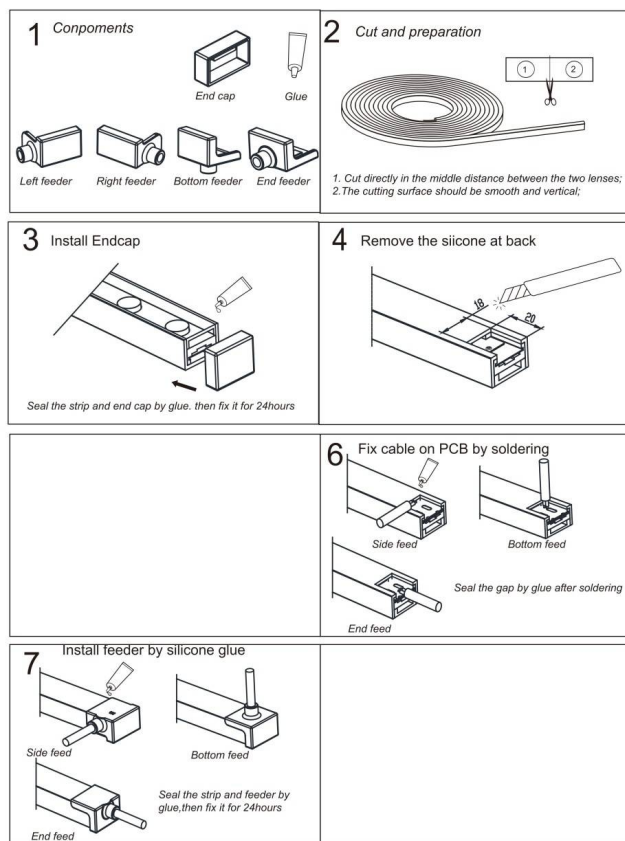


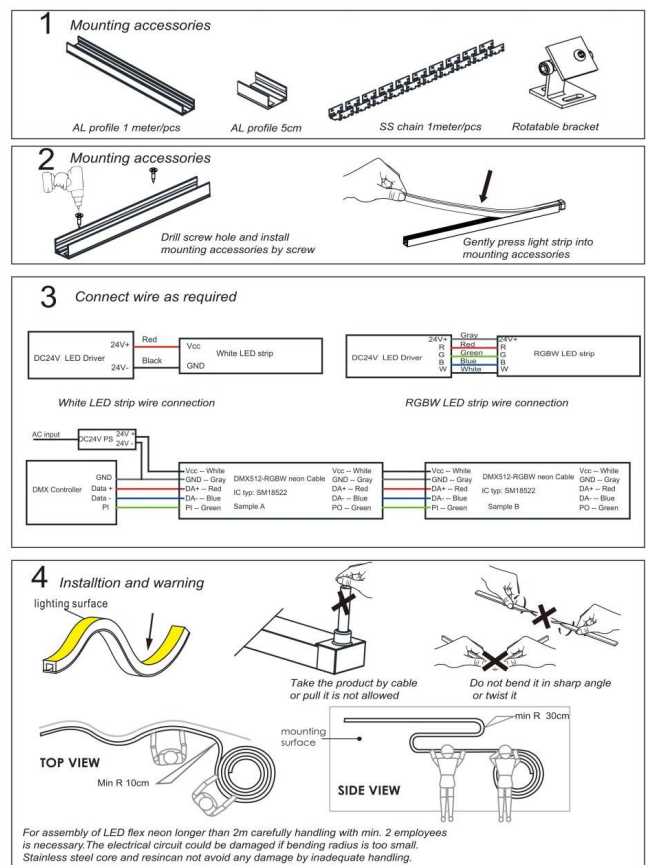


- Installation and wiring of luminaire must be in accordance with all applicable local codes.
- Installation, inspection, and maintenance of luminaires should be performed by a qualified electrician.
- DO NOT make or alter any open holes in the luminaire. Do not modify the luminaire.
- DO NOT install damaged product.
- Make sure electrical power is OFF before and during installation and maintenance.
- Make sure the equipment is properly grounded.
- Make sure the supply voltage is same as the rated fixture voltage.

3D Neon Cutting and Connection Guide



Installation Guide



For assembly of LED flex neon longer than 2m carefully handling with min. 2 employees is necessary. The electrical circuit could be damaged if bending radius is too small. Stainless steel core and resin can not avoid any damage by inadequate handling.